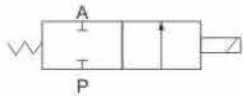




Specification

Model	2V025-06	2V025-08
Working Medium	Air,water,oil	
Action Mode	Direct acting type	
Type	Normally-closed type	
Flow hole diameter mm	2.5	
CV value	0.23	
Port size	G1/8"	G1/8"
Service fluid viscosity	20 CST below	
Working pressure	Air,water,oil	
Max.pressure resistance	1.5MPa	
Working temperature range	-10 ~ 80°C	
Voltage range	±10%	
Protect class	IP 65	
Power consumption	AC: 7VA/60Hz, 9VA/50Hz; DC: 6W	
Insulation	F Class	
Body material quality	Aluminum or Brass	
Oil seal material	NBR or VITON	
Shortest activate time	0.05 second	

Symbol



Ordering code

2V	025	06	AC2200V
Flow hole diameter		Port size	Standard voltage
012: 1.2mm		06: G1/8"	DC12V
020: 2mm		08: G1/4"	DC24V
025: 2.5mm		10: G3/8"	AC24V 50Hz/60Hz
040: 4mm		15: G1/2"	AC110V 50Hz/60Hz
Specification Code		20: G3/4"	AC220V 50Hz/60Hz
2V: 2-position and 2-way solenoid valve		25: G1"	AC380V 50Hz/60Hz

Overall Dimension

